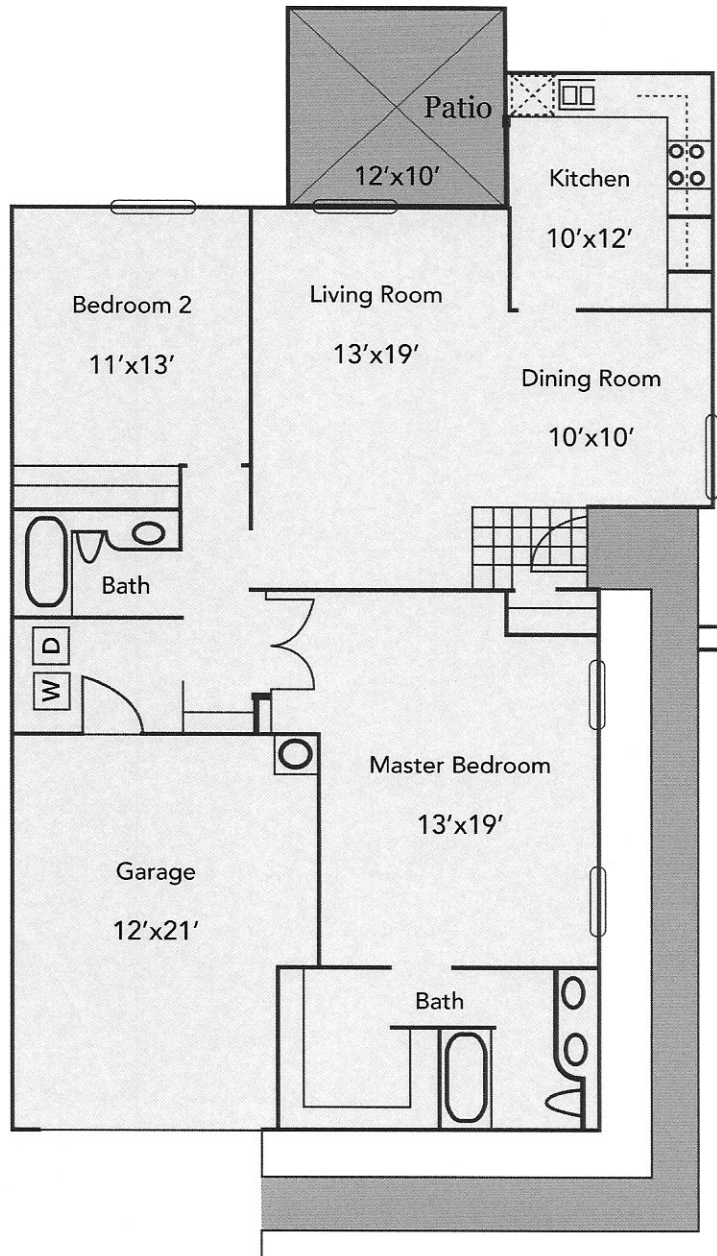


HOLMBY II

LEISURE VILLAGE



Approximate
Sq. Ft
1,309'

<p>John Baker Cell: 805.233.1525 JohnBakerHomes@gmail.com DRE #01804388</p>		<p>Shawn Baker Cell: 805.233.1725 ShawnBakerHomes@gmail.com DRE #01945168</p>
--	---	--

Dimensions are approximate. Individual units may vary.
This floor plan comes from Architectural Guidelines.